

2nd Announcement & Call for Abstracts



# International Conference **STROKE UPDATE 2012**

November 15(Thu)~17(Sat), 2012 | Shilla Hotel, Jeju Island, Korea



[www.strokeupdate-kss.org](http://www.strokeupdate-kss.org)



## C O N T E N T S

Welcome to Jeju \_04

Conference Information \_05

Program at a Glance \_06

Scientific Program \_06

Call for Abstracts \_12

Registration \_13

Accommodation \_14

Transportation \_16

Optional Tour \_18

About Jeju \_22

General Information \_25



# Welcome to Jeju

On behalf of the Korean Stroke Society, it is my great pleasure to invite you to the International Conference STROKE UPDATE 2012, which will take place on Jeju Island, Korea from November 15<sup>th</sup> to the 17<sup>th</sup>, 2012.

This is a great time considering all of the exciting discoveries and rapid progress taking place in the field of therapeutic strategy. Overall, our knowledge of the pathophysiology of strokes is getting much deeper.

With these current advancements in mind, STROKE UPDATE 2012 will be a valuable time to share our cutting-edge academic achievements and to network and establish friendships with world-wide stroke experts.

Jeju Island is described as "Nature's Paradise in the North Pacific". This beautiful island was created by volcanic activity and is a UNESCO World Heritage Site. It boasts; great weather, gorgeous beaches, stunning waterfalls, and a world-renowned Lava Tube system. All of these things come together to create a perfect environment for an engaging, entertaining, and fun experience at the STROKE UPDATE 2012.

The Scientific Program Committee is preparing this wonderful conference. They have excellent work in basic and clinical research relating to stroke and cerebrovascular diseases. With this in mind, we cordially invite you to participate and contribute to the success of the International Conference STROKE UPDATE 2012.

Once again, please join us at the conference and enjoy academic discussions and build friendships with stroke experts on the beautiful island of Jeju in Korea.



Byung-Woo Yoon, M.D., Ph.D.  
Chairman, The Korean Stroke Society



Byung-Chul Lee, M.D., Ph.D.  
President, The Korean Stroke Society

## Conference Information

### Organization

Byung-Woo Yoon

Kyung-Ho Yu

Eui-Jong Kim

Byung-Chul Lee

Seung-Hoon Lee

Deog Young Kim

Chin-Sang Chung

Sun U. Kwon

Eung-Gyu Kim

Jong S. Kim

Joung-Ho Rha

Soo-Joo Lee

Ji Hoe Heo

Hee-Joon Bae

Im-Seok Koh

### Date

November 15 (Thu) ~ November 17 (Sat), 2012

### Important Dates

- Call for Abstract : August 15, 2012
- Abstract Submission Due : September 17, 2012
- CV Submission Due : October 5, 2012
- Early Registration Due : October 14, 2012

### Official Language

English is the official language of the conference

### Website

[www.strokeupdate-kss.org](http://www.strokeupdate-kss.org)

### Venue



The Shilla Jeju

The Sounds of the Pacific Ocean Waves, the tranquility of Mt. Halla and the Star-filled night sky make the The Shilla jeju a true delight for all the senses.

The Shilla jeju is truly the perfect place to escape.

Address: 3039-3, Saekdal-dong, Seogwipo-si, Jeju-do, Korea, 697-808

Tel: +82-64-735-5114 Fax: +82-64-735-5415

### STROKE UPDATE Secretariat

c/o LS Communications Co.

Dongyang Trevell Officetel #109, 451-20 Chunho 3 dong, Gangdong-gu, Seoul 134-721 Korea

Tel: +82-2-476-6718 Fax: +82-2-476-6719

General Inquiry: [info@strokeupdate-kss.org](mailto:info@strokeupdate-kss.org)

Scientific Program: [abstract@strokeupdate-kss.org](mailto:abstract@strokeupdate-kss.org)

## Program at a Glance

	Nov. 15 (THU)	Nov. 16 (FRI)		Nov. 17 (SAT)	
	Room A (Halla Hall)	Room A (Halla Hall)	Room B (Lotus Hall)	Room A (Halla Hall)	Room B (Lotus Hall)
07:30 ~08:30		Breakfast Symposium 1	Breakfast Symposium 2	Breakfast Symposium 3	Breakfast Symposium 4
09:00 ~10:50		Symposium 1 <b>Atrial Fibrillation and Stroke</b>	Symposium 2 <b>What's Hot in Basic Stroke Research</b>	Symposium 5 <b>Acute Stroke Treatment</b>	Symposium 6 <b>BP and Lipid in Stroke</b>
10:50 ~11:10		Coffee Break		Coffee Break	
11:10 ~12:00		Plenary Session 1		Plenary Session 2	
12:00 ~12:10					
12:10 ~13:00		Luncheon Symposium 1	Luncheon Symposium 2	Luncheon Symposium 3	Luncheon Symposium 4
13:00 ~14:00		Poster Presentation 1		Poster Presentation 2 & Coffee Break	
14:00 ~15:00		Oral Session 1	Oral Session 2	Symposium 7 <b>Post-stroke Functional Reorganization</b>	Nursing Symposium
15:00 ~15:10					
15:10 ~16:10		Oral Session 3	Oral Session 4		
16:10 ~16:30		Coffee Break		Oral Session 5	
16:30 ~18:20		Symposium 3 <b>Neurocritical Care in Acute Stroke</b>	Symposium 4 <b>Hemorrhagic Stroke</b>		
18:20 ~18:30					
18:30 ~19:30	Welcome Reception	Evening Symposium 1	Evening Symposium 2		

### • Scientific Program

The Scientific Program of the conference consists of **invited symposium and scientific sessions (Oral & Poster)**. The seven most popular and attractive topics will be highlighted during the conference; **"What's hot in basic stroke research"**, **"Atrial fibrillation and stroke"**, **"Neurocritical care in acute stroke"**, **"Acute stroke treatment"**, **"Post-stroke functional reorganization"**, **"Hemorrhagic stroke"** and **"BP and lipid in stroke"**. The tentative schedule and more information on the scientific session are available on the website at [www.strokeupdate-kss.org](http://www.strokeupdate-kss.org).

### • Keynote Lectures



Craig Anderson  
(University of Sydney, Australia)



Michiel L. Bots  
(Julius Center for Health Sciences and Primary Care, University Medical Center Utrecht, Netherlands)



Eng Lo  
(Harvard Medical School, USA)



M. Parsons  
(John Hunter Hospital, University of Newcastle, Australia)



Gene Sung  
(University of Southern California, USA)



Steven Warach  
(Southwestern Medical Center, USA)



Hans-Christopher Diener  
(University of Duisburg-Essen, Germany)



Yining Huang  
(Peking University First Hospital, China)



Hiroaki Naritomi  
(Senri Chuo Hospital, Japan)



Yukito Shinohara  
(Tachikawa Hospital, Japan)



Ichiro Miyai  
(Neurorehabilitation Research Institute, Japan)

## Nov. 16 (FRI)- Room A

07:30-08:30	Breakfast Symposium 1	
08:50-09:00	Opening Remark	
	<b>Symposium 1.</b> <b>Atrial Fibrillation and Stroke</b>	
09:00-09:35	What are RCTs on new anticoagulants saying?	Hans-Christoph Diener (University of Duisburg-Essen, Germany)
09:35-09:55	Burden of cardioembolic stroke	Byung-Woo Yoon (Seoul National University Hospital, Korea)
09:55-10:15	Outcome of cardioembolic stroke	Keun-Sik Hong (Inje University Ilsan Paik Hospital, Korea)
10:15-10:50	TBA	Yining Huang (Peking University First Hospital, China)
10:50-11:10	Coffee Break	
	Plenary Session 1	
11:10-12:00	Biphasic mechanisms in the neurovascular unit	Eng Lo (Harvard Medical School, USA)
12:00-12:10	Transfer	
12:10-13:00	Luncheon Symposium 1	
13:00-14:00	Poster Presentation 1	
14:00-15:00	Oral Session 1	
15:00-15:10	Transfer	
15:10-16:10	Oral Session 3	
16:10-16:30	Coffee Break	
	<b>Symposium 3.</b> <b>Neurocritical Care in Acute Stroke</b>	
16:30-16:50	How to organize a neurocritical care in stroke; Introduction, current status and establishment of NCC Unit	Moon-Ku Han (Seoul National University Bundang Hospital, Korea)
16:50-17:10	Multimodal neuromonitoring in severe stroke	Sang -Bae Ko (Seoul National University Hospital, Korea)
17:10-17:45	Hypothermia after cardiac arrest. so called "anoxia from arrest; giant stroke"	Gene Sung (University of Southern California, USA)
17:45-18:20	Management of progressive lacunar stroke: STOP BAD "Study for treatment, overt signs and pathophysiology of branch atheromatous disease"	Hiroaki Naritomi (Senri Chuo Hospital, Japan)
18:20-18:30	Transfer	
18:30-19:30	Evening Symposim 1	
19:30-21:30	Presidential Dinner	

## Nov. 16 (FRI)- Room B

07:30-08:30	Breakfast Symposium 2	
	<b>Symposium 2.</b> <b>What's Hot in Basic Stroke Research</b>	
09:00-09:15	Vascular aspects of neurodegeneration	Hahn Young Kim (Konkuk University Hospital, Korea)
09:15-09:30	Small animal imaging in atherothrombosis and stroke	Dong-eog Kim (Dongguk University Hospital, Korea)
09:30-10:00	The role of brain zinc in ischemic neuronal death	Jae-Young Koh (University of Ulsan, Korea)
10:00-10:30	Translational targets in neuroprotection and stroke	Eng Lo (Harvard Medical School, USA)
10:30-10:50	Q&A	
10:50-11:10	Coffee Break	
11:10-12:00	Plenary Session 1 (Room A)	
12:00-12:10	Transfer	
12:10-13:00	Luncheon Symposium 2	
13:00-14:00	Poster Presentation 1	
14:00-15:00	Oral Session 2	
15:00-15:10	Transfer	
15:10-16:10	Oral Session 4	
16:10-16:30	Coffee Break	
	<b>Symposium 4.</b> <b>Hemorrhagic Stroke</b>	
16:55-17:20	Current neurological issues in hypertensive ICH	Chin-Sang Chung (Samsung Medical Cenetr, Korea)
17:20-17:45	Update for surgical management of hypertensive ICH	In Sung Park (Gyeongsang National University Hospital, Korea)
17:45-18:10	Update for natural history & clinical guideline for unruptured aneurysms	Chang Wan Oh (Seoul National University Bundang Hospital, Korea)
18:10-18:20	Recent management of SAH	Tae-Sun Kim (Chonnam National University Hospital, Korea)
18:20-18:30	Q&A	
18:30-19:30	Transfer	
19:30-21:30	Evening Symposim 2	
	From the past and promises for the future for carotid intima-media thickness	Michiel L. Bots (Julius Center for Health Sciences and Primary Care, University Medical Center Utrecht, Utrecht, The Netherlands)

## Nov. 17 (SAT)- Room A

07:30-08:30	Breakfast Symposium 3	
	<b>Symposium 5. Acute Stroke Treatment</b>	
09:00-09:35	The uses of MRI to direct acute stroke management	Steven Warach (Southwestern Medical Center, USA)
09:35-09:55	Intra-arterial thrombolysis : Update	Woong Yoon (Chonnam National University Hospital, Korea)
09:55-10:15	Intracranial stenting update	Byung Moon Kim (Yonsei University Severance Hospital, Korea)
10:15-10:50	Tenecteplase trial result	M. Parsons (John Hunter Hospital, University of Newcastle, Australia)
10:50-11:10	Coffee Break	
	Plenary Session 2	
11:10-12:00	Approaches to expanding the indications for thrombolytic stroke therapy	Steven Warach (Southwestern Medical Center, USA)
12:00-12:10	Transfer	
12:10-13:00	Luncheon Symposium 3	
13:00-14:00	Poster Presentation 2 & Coffee Break	
	<b>Symposium 7. Post-stroke Functional Reorganization</b>	
14:00-14:30	Functional reorganization induced by rTMS combined with sequential motor training	Woo-Kyung Yoo (Hallym University Hospital, Korea)
14:30-15:00	Functional change of brain in aphasia following stroke	Sung Bom Pyun (Korea University Hospital, Korea)
15:00-15:40	Clinical application of functional NIRS for stroke rehabilitation	Ichiro Miyai (Neurorehabilitation Research Institute, Japan)
15:40-15:50	Q&A	
15:50-16:00	Transfer	
16:00-17:00	Oral Session 5	

## Nov. 17 (SAT)- Room B

07:30-08:30	Breakfast Symposium 4	
	<b>Symposium 6. BP and Lipid in Stroke</b>	
09:00-09:30	The primary and secondary stroke prevention in dyslipidemic patients in Japan	Yukito Shinohara (Tachikawa Hospital, Japan)
09:30-10:00	What's new in hypertension management in stroke? - measurement, variability and timing	Craig Anderson (University of Sydney, Australia)
10:00-10:30	Lipid lowering, atherosclerosis progression, and recurrent stroke	Michiel L. Bots (Julius Center for Health Sciences and Primary Care, University Medical Center Utrecht, Netherland)
10:30-10:50	Q&A	
10:50-11:10	Coffee Break	
11:10-12:00	Plenary Session2 (Room A)	
12:00-12:10	Transfer	
12:10-13:00	Luncheon Symposium 4	
13:00-14:00	Poster Presentation 2 & Coffee Break	
14:00-15:50	Nursing Symposium	

## Call for Abstracts

### • Scientific Session Topics

- Epidemiology
- Pathophysiology of Stroke
- Risk Factors and Primary Prevention of Stroke
- Neuroimaging
- Acute Management & Prognosis of Stroke
- Interventional Neuroradiology
- Secondary Prevention of Stroke
- Rehabilitation & Restorative Therapy in Stroke

### • Presentation Type

When submitting abstracts, the submitter is required to select the presentation type as **Oral, Poster or Either**.

### • Submission Guidelines

1. All abstracts must be submitted via the conference website **ONLY**. Abstract sent by fax or e-mail will not be accepted.
2. All abstracts should be written in **English**.
3. It is the responsibility of the presenting author and the submitter to review the submission status & information and correct them. Submitters are responsible for any typo error in the abstract.
4. The presenting author's name should be underlined.
5. The abstract should be limited to;
  - 400 words (text only)
  - 300 words and 1 image or table
6. The abstracts should be organized according to the each abstract form.
7. The font should be fixed as size 12.
8. An acknowledgement of the receipt of the abstract submission will be sent automatically to the submitter by e-mail upon the on-line submission.
9. It is recommended for the oral presenters to submit their CV after abstract review. Please submit your CV via the conference website after checking your review result. (Optional)

### • Important Dates

- Call for Abstract : August 15, 2012
- Abstract Submission Due : September 17, 2012
- CV Submission Due : October 5, 2012
- Early Registration Due : October 14, 2012

## Registration

### • On-line registration

- ONLY On-line registration is available at the conference website.,
- The registration will not be completed until you pay the registration fee.
  - The confirmation of registration will be sent via e-mail.

### Registration Fees

Category	Early Rate (until October 14, 2012)	
M.D	KRW 200,000	USD 200
Trainee	KRW 100,000	USD 100
Allied Health Professionals*	KRW 70,000	USD 70
Accompanying Person	KRW 50,000	USD 50

\* Allied Health Professionals: nurse, paramedical person and technician etc

### • Participant's Registration fee Includes

- Participation in all Scientific Sessions (including Breakfast, Luncheon and Evening Symposium)
- Printed material of the conference (Program Book & Abstracts)
- Coffee Breaks
- Entrance to the exhibition area

### Important Dates

- Early Registration Due : October 14
- On-Site Registration : November 15-17

## Hotel Information & Room Rates

Class	Hotel Name	Room Type	Special Rates (KRW/Room/Night)	Distance to Venue
★★★★★	 Shilla Hotel	Superior Mountain view	200,000 breakfast not include	venue (www.shilla.net/kr/jeju)
		Superior Ocean view	250,000 breakfast not include	
★★★★★	 Suites Hotel	Superior	170,000 breakfast not include	3 min. on foot (www.suites.co.kr)
★★★★	 Hana Hotel	Double/ Twin	90,000 breakfast not include	5 min. on foot (www.hotelhana.co.kr)
		Deluxe Double	110,000 breakfast not include	
	 Hankook Condominium	2 Bedroom	100,000 / Weekday 120,000 / Weekend	10 min. on foot (www.corea-condo.com/branch/branch_05.asp)
	 Springhill Resort	Superior / 1 Bedroom	170,000 / Weekday 190,000 / Weekend	5 min. by car (www.springhill.co.kr)
		Royal Suite / 2 Bedroom	240,000 / Weekday 260,000 / Weekend	
	 Jeju Grandville	1 1 Bedroom	90,000 / Weekday 100,000 / Weekend	5 min. by car (www.grandville.co.kr)
		2 1 Bedroom	120,000 / Weekday 130,000 / Weekend	
		3 2 Bedroom	140,000 / Weekday 150,000 / Weekend	
		4 2 Bedroom	160,000 / Weekday 170,000 / Weekend	
		5 1 Bedroom	160,000 / Weekday 170,000 / Weekend	
		6 1 Bedroom	90,000 / Weekday 100,000 / Weekend	
		7 1 Bedroom	90,000 / Weekday 100,000 / Weekend	

Class	Hotel Name	Room Type	Special Rates (KRW/Room/Night)	Distance to Venue
	 Jeju Evergreen Forest Pension	Cinema / 2 Bedroom	160,000 / Weekday 180,000 / Weekend	10 min. by car (www.jejuview.com)
		2 Multi / 2 Bedroom	160,000 / Weekday 180,000 / Weekend	
		Suite / 1 Bedroom	170,000 / Weekday 190,000 / Weekend	
		Family / 2 Bedroom	170,000 / Weekday 190,000 / Weekend	
		Unshared House / 3 Bedroom	350,000 / Weekday 400,000 / Weekend	

### • Booking & Payment Conditions

- The room rates are fixed in Korean Won, and the rates in US\$ are subject to change according to foreign exchange rates.
- Room tax & service charge :
  - Shilla Hotel and Suites Hotel: 21% tax & service charge will be added to the above room rates.
  - Hana Hotel, Hankook Condominium and Pensions: 10% tax included.
- As rooms will be assigned **on a first-come, first-served basis**, early reservation is recommended.  
Room availability and rates may not be guaranteed.
- Early check-in and late check-out charges will be applied to each hotel's policy.
- An acknowledgement of reservation will be automatically sent to you by e-mail after online reservation, but it does NOT mean your reservation is confirmed. Please wait for the confirmation from the secretariat which will be sent you by email.

### • How to Reserve

- Visit the conference [website www.strokeupdate-kss/accommodation](http://www.strokeupdate-kss/accommodation) for the hotel reservation.  
The hotel reservation is ONLY available at the conference website.



## Transportation

### Access to Jeju

There are four ways to fly to Jeju Island:

- |   |   |
|---|---|
| 1 | Direct international flight   |
| 2 | Transfer through Asian major hub airports where direct flights to Jeju Island are available   |
| 3 | Transfer from Incheon International Airport (ICN) which is the gateway to the Republic of Korea   |
| 4 | Transfer through Incheon International Airport, bus transfer to Gimpo Airport (GMP - the second airport of Seoul) and then to Jeju Island<br>Please make sure to arrange your travel until Jeju Island. The IATA code of Jeju International Airport is CJU. |

### 1. & 2. Flying straight to Jeju Island

The following schedule can be changed according to the situation of the airline. (July, 2012)

#### Regularly Scheduled Flights

Japan: Tokyo (Narita), Osaka (Kansai), Nagoya, Fukuoka

China: Beijing, Shanghai (Pudong), Hongkong

Taiwan: Taipei

#### Non-scheduled Flight

China: Hangzhou, Shenyang, Changchun

### 3. From Incheon International Airport

From Incheon International Airport, there are a few flights to Jeju Island with Korean Air and Asiana Airlines, with a flight time of approximately one hour. For flight schedules, please check the airline websites.

You can also move to Gimpo International Airport from Incheon International Airport easily. On arrival at Incheon International Airport, take an airport limousine bus to Gimpo Airport. It takes about 30 minutes and the fare is 6,000 Korean won (US 5\$). The airport limousine bus runs everyday from 05:00 to 21:30 at 5 to 10 minute intervals.

### 4. From Gimpo International Airport

There are 50 to 70 flights everyday from Gimpo Airport to Jeju with Korean Air, Asiana Airlines, Jeju Air and T'way and the flight time is approximately 55 minutes. For flight schedules, please check the airline websites.

Travel from Incheon to Gimpo Airport takes about 30 minutes. However you should plan 3 hours between your arrival time at Incheon. International Airport and your departure time at Gimpo International Airport to allow for check in. Therefore if you arrive at Incheon International Airport after 17:30, you may not be able to fly on the same day to Jeju Island and you should stay overnight in one of the hotels near to Gimpo airport.



# OPTIONAL TOUR

[ Tour Theme ]

## Outdoor Activities

## Excursions



- O-1 Trekking Olle
- O-2 Yacht
- O-3 Trekking Mt. Halla

- E-1 East Coast
- E-2 South Coast I
- E-3 South Coast II
- E-4 Westbound
- E-5 Eastbound
- E-6 Udo Island

### • Outdoor Activities

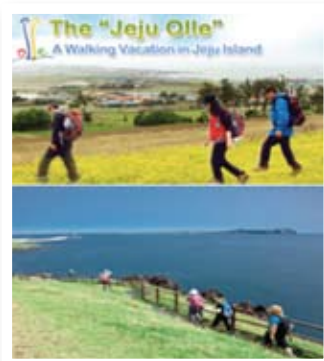
#### O-1 Trekking Olle : 09:00 – 15:00

<b>Itinerary</b>	Trekking Olle
<b>Price</b>	KRW90,000/person (Minimum 10persons basis)
<b>Condition</b>	<ul style="list-style-type: none"> <li>· English speaking guide</li> <li>· 15-seat bus</li> <li>· Lunch box &amp; soft drink will be provided</li> </ul>

#### Description

“Olle” is the Jeju word for a narrow pathway that is connected from the street to the front gate of a house. Hence, “Olle” is a path that comes out from a secret room to an open space and a gateway to the world.

The first trail route was opened to the public in September, 2007 and currently eleven routes have been opened. Like ‘Camino de Santiago’ in Spain or Shikoku Pilgrimage ‘Ohenro’ in Japan, Jeju Olle hopes all walkers who explore the routes gain “peace, happiness and healing” on the road.



#### O-2 Yacht Tour : 13:00 – 16:30

<b>Itinerary</b>	Yachting in Jungmun Beach(70mins.)
<b>Price</b>	KRW125,000/person (Minimum 10persons basis)
<b>Condition</b>	<ul style="list-style-type: none"> <li>· English speaking guide</li> <li>· 15-seat minibus</li> <li>· Admission included</li> </ul>

#### Description

Take a comfortable and relaxing yacht tour on the vast blue waters surrounding Jeju-do Island. Enjoy a glass of wine or beverage while indulging in the ocean scenery. Fishing is another program available on the yacht tour for everyone to enjoy.



#### O-3 Mt. Halla National Park Trek (Level : medium to high) : 08:00 – 15:00

<b>Itinerary</b>	Mt. Halla Trek (Yeongsil Trail)
<b>Price</b>	KRW80,000/person (Minimum 10persons basis)
<b>Condition</b>	<ul style="list-style-type: none"> <li>· English speaking guide</li> <li>· 15-seat bus</li> <li>· Admission included</li> </ul>

#### Description

**Yeongsil Trail** is one of the Ten Most Beautiful Scenic Views of Jeju Island. Along this trail can be found Yeongsilkiam, which shares its beauty with visitors in every season. A one-way trip starting at Yeongsil Resting Area to Witsae-oreum Shelter(3.7km foot trail, altitude 1,700m) takes 2hours. With the exception of the steep Yeongsil Crater Ridge, most of the course is very even and easy to hike. Therefore, wearing comfortable clothes and sneakers or boots would do. Good hiking boots would be of great benefit



### • Excursions

#### E-1 East Coast Excursion : 08:30 – 12:30

<b>Itinerary</b>	Seongsan Sunrise Peak – Jeju Haenyeo Museum
<b>Price</b>	KRW75,000/person (Minimum 10persons basis)
<b>Condition</b>	<ul style="list-style-type: none"> <li>· English speaking guide</li> <li>· 15-seat minibus</li> <li>· Admission included</li> </ul>

#### Description

**Seongsan Sunrise Peak**, rose from under the sea in a volcanic eruption over 100,000 years ago. The crater is about 600m in diameter and 90m high. With the 99 sharp rocks surrounding the crater, it looks like a gigantic crown.

**Jeju Haenyeo Museum** to introduce to the world Jeju's unique activities and culture of the haenyeo female divers. Haenyeo refers to female divers who dive into the ocean water to gather various shellfish, seaweeds, etc, without using any underwater diving equipment.



#### O-3 Mt. Halla National Park Trek (Level : medium to high) : 08:00 – 15:00

<b>Itinerary</b>	Cheonjeyeon Waterfalls – Yakcheonsa Temple – Jusangjeolli
<b>Price</b>	KRW85,000/person (Minimum 10persons basis)
<b>Condition</b>	<ul style="list-style-type: none"> <li>· English speaking guide</li> <li>· 15-seat minibus</li> <li>· Admission included</li> </ul>

#### Description

**Cheonjeyeon Waterfalls**, named ‘The pond of God’, consists of 3 parts. Around the falls, there are rare plants. There is a cave in the east and from the ceiling cold water pours down creating the waterfall. The water from the first waterfall becomes the second and third waterfalls and flows into the sea.





**Yakcheonsa** Temple located on the seaside cliff, was built in the Buddhist style of early Joseon dynasty in the height of 30 meters (same as a 10 story building) and the size of 3,305 square meters boasting to be the largest main prayer hall in Asia. A temple bell weighing 18 tons is hanged on the belfry in front of the hall.

**Jusangjeolli**, stone pillars piled up along the coast. It was formed when the lava from Mt. Hallasan flew to the sea of Jungmun.

### E-3 South Coast Excursion II : 13:30 – 17:00

<b>Itinerary</b>	Jeju Folk Village Museum – Seopjikoji
<b>Price</b>	KRW70,000/person (Minimum 10persons basis)
<b>Condition</b>	<ul style="list-style-type: none"> <li>· English speaking guide</li> <li>· 15-seat minibus</li> <li>· Admission included</li> </ul>

#### Description

**Jeju Folk Village Museum**, a comprehensive collection of traditional folk articles from the Island, which were mostly prevalent around the 1890's. More than 100 traditional houses were removed from their original locations where the islanders had actually resided even along with a piece of stone and pole. Over 8,000 pieces of folk articles are displayed such as household equipment, farming instruments, fishing tools, furniture, and stone wares. The village performance team performs folk plays 3 times a day. The team not only entertains the guests with fascinating performances but also plays a leading role in handing down the precious cultural heritage.

**Seopjikoji** is located at the end of the eastern shore of Jeju-do Island. "Seopji" is the old name for the area, and "Koji" is Jeju dialect meaning a sudden bump on land.

### E-4 Westbound Excursion : 13:30 – 17:30

<b>Itinerary</b>	Spirited Garden – O'sulloc Tea Museum – Yongmeori Coast
<b>Price</b>	KRW67,000/person (Minimum 10persons basis)
<b>Condition</b>	<ul style="list-style-type: none"> <li>· English speaking guide</li> <li>· 15-seat minibus</li> <li>· Admission included</li> </ul>

#### Description

**Spirited Garden** is the world's largest botanical garden with a total landscape of approximately 39,700m<sup>2</sup>. This garden is rich with maple trees, wisterias and pine trees that are between 30 to 300 years old. Roughly 100 rare species of trees are also in the garden. The garden possesses approximately 1,700 trees, and also boasts 100,000 of its Jeju wild flowers, orchids, and other various garden trees and plants which collectively form a unique scenic harmony.

**O'sulloc** was built at the entrance of Seogwang Tea Farm owned by Sulloc Tea Company. It has served as a place of culture balanced with tradition and modernity and nature-friendly relaxation. It will also help you to understand traditional Korean tea culture while enjoying a variety of green tea.



**Yongmeori Coast** looks as if a dragon's head is going underwater. There are Gulbangs here which are depressed into the shape of rooms, and wide rocks stacking up on one another along the seashore cliffs which create majestic scenery by the sea. If time permits, you may see the Hamel Castaway Memorial, in remembrance of Hamel who drifted to this place in 1653, along the road down to the seashore. You may meet the women sea-divers of Jeju who sell sea cucumbers and stroll on the road that spreads along the seashore.

### E-5 Eastbound Excursion : 08:30 – 13:30

<b>Itinerary</b>	Jeju Stone Park – Sangumburi Crater
<b>Price</b>	KRW65,000/person (Minimum 10persons basis)
<b>Condition</b>	<ul style="list-style-type: none"> <li>· English speaking guide</li> <li>· 15-seat minibus</li> <li>· Admission included</li> </ul>

#### Description

**Jeju Stone Park** is an ecological and cultural park that displays the history of stone culture pivotal to the history and culture of Jeju Island. Jeju Stone Park has been created with stones, soil, trees, iron and water. The main theme consists of the legend about Grandmother Seolmundae who created Jeju Island and the stones of the Five Hundred Generals. It's one of the most unique cultural parks, harmonizing Jeju's beautiful nature with its culture.

**Sangumburi** is a crater with a circumference of over 2 km, and has been designated as a Natural Monument. Along with the approximately 360 parasitic volcanic cones in Jeju Island, it exploded under a geological bridge, erupting many times without any further explosions, and formed a crater with a hole. If you look at the crater from above up, it looks like a man-made circular stadium.

### E-6 Udo Island Tour : 09:00 – 16:00

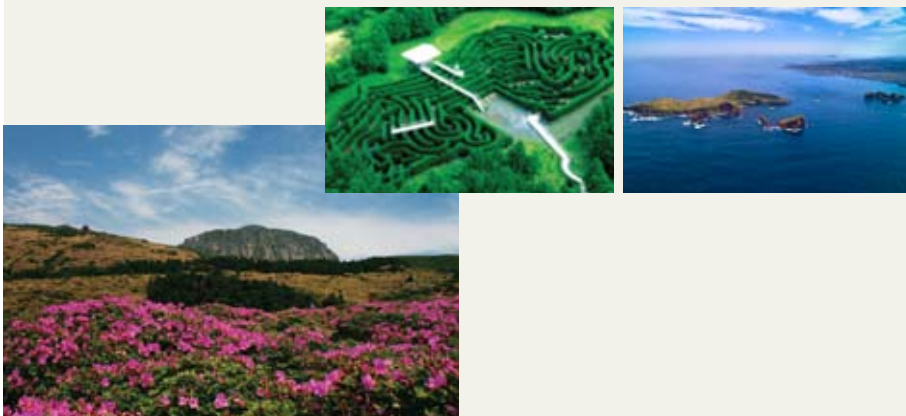
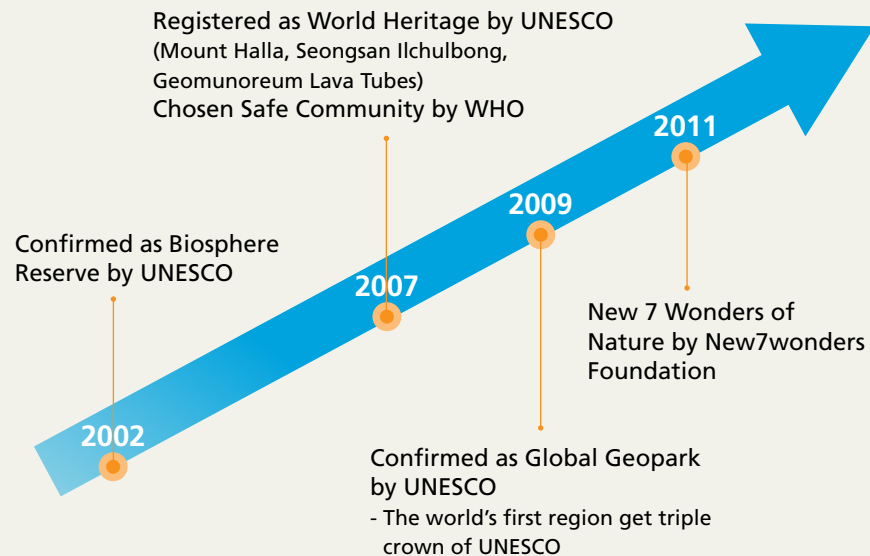
<b>Itinerary</b>	Udo Island(Island tour & Free time at the sandy beach)
<b>Price</b>	KRW95,000/person (Minimum 10persons basis)
<b>Condition</b>	<ul style="list-style-type: none"> <li>· English speaking guide</li> <li>· 15-seat minibus</li> <li>· Admission included</li> <li>· Lunch box &amp; soft drinks included</li> </ul>

#### Description

Situated on the eastern end of Jeju Island, Udo Island was named because it resembles a lying cow. It boasts fertile soils, abundant schools of fish, and scenic sights; local heritage (female divers, stone walls, and stone tombs) as well as natural attractions abound on the island, making it a miniature of Jeju Island. Residing in Udobong Peak (132.5m), the highest spot on the island, is a lighthouse surrounded by a spacious park. The peak offers outstanding overlooks of the island at a glance. You can relax on the white sandy beach or rent a scooter or ATV to ride around the island.

## About Jeju

### *The Natural World Heritage: Jeju Island*



Jeju is proud of its unique cultural folk heritage as well as its geographical and historical relevance.

The island itself is an extinct volcano with its peak jutting skyward at the center and a broad, gentle littoral all the way around, a very unique geographical condition. There are bountiful forests and ravines, fantastic rock formations and volcanic craters, and caves and grasslands that together paint a natural scene of breathtaking beauty. Sparkling seas and tiny islets surround Jeju, with jutting rocks set amidst sandy beaches to create a magnificent view virtually everywhere you look.

In June 2007, the volcanic island and lava tube cave systems were designated as UNESCO World Natural Heritage Sites for their natural beauty and geographical value. Jeju Island is not only Korea's most prestigious destination and top honeymoon location but it has been the venue for several political joint summit talks and other major international meetings.



### Jeju is proud of its special gifts

With Mt. Halla rising in the middle of the island, Jeju is covered with swamps, parasitic volcanoes, craters, caves, grasslands, woods and valleys abundant with animals and plants. The lovely scenery enhances the beauty of the surrounding shallow waters. Shoreline features include strangely shaped rocks, waterfalls, and a variety of sands. Mountain and sea make Jeju a natural for tourism.

### Samda : Three Abundance (Rocks, Wind, Women)

"Three abundance" is a famous term that characterizes the three things which are abundant on Jeju. They are Seokda (rocks), Pungda (wind), and Yeoda (women). That's why they call Jeju Samdado: the island of three abundance. Seokda originated from the Mt. Halla volcanic activity of the past. People had to cultivate the land through a long process of clearing away the numerous rocks covering the land and then form the inlets for irrigation, then construct the walls for protection against wind. Seokda, tells of the harsh surroundings of Jeju. Jeju is located in the path of typhoons, so the islanders had to fight against the sea. The effect of Pungda and Seokda shows in Jeju life styles. Two examples are the thatched roofs of Jeju which are tied up with straw rope, and the fields surrounded by stone walls. Yeoda originated from the fact that most men of Jeju were lost at sea, which made women larger in number. Also, women had to come out to the fields with men due to the Jeju's living environment being harsh. Yeoda is a comment on population statistics, but moreover it is a metaphor for the diligent women of Jeju. The famous women-divers who fight against wild waves to catch fish are the very symbol of Jeju.

### Sammu : Three Non-Existence (Thief, Gate, Beggar)

Sammu is the term meaning there are no thieves, gates or beggars on Jeju. From the old days, Islanders have made "diligence, thrift, interdependence" their virtues in order to pioneer the rough and harsh surroundings. So they didn't steal or beg, which led to the condition of having no use for fences or gates. Also, all the inhabitants were the descendants of Tamna, scholars who were banished due to their great will to keep their principles. Therefore they all valued their honor highly. They also knew everything about each other, which prohibited them from doing anything bad or dishonorable. So islanders led diligent, thrifty, and interdependent lives. They didn't need barriers. They only needed to leave a long log at the entrance of their homes to let the others know that the owner was out.

### 'Dolharubang' means 'Stone Grandfather

A Dolharubang is a statue sculpted out of volcanic rock from Jeju that looks somewhat like a man or spirit guardian. Dolharubangs are found all over the island and come in all sizes, from ones that can be placed on one's desk to those larger than a human. Superstition says that touching its nose helps women give birth to a boy. So, many honeymooning couples can be seen lining up to do just so, each standing to either side to have their pictures taken with their hands on its nose.

Reference: Jeju special self-governing province



## General Information

### Climate

Korea's climate is regarded as a continental climate from a temperate standpoint and a monsoonal climate from a precipitation standpoint. The climate of Korea is characterized by four distinct seasons: spring, summer, fall, and winter. The average temperature during the conference is between 8°C and 19°C which will be perfectly pleasant and comfortable.



### Food

Eating out is one of the great pleasures of visiting Korea, a country famous for its diverse native dishes. Korean cuisine is nutritious, well balanced and low in calories as it involves a wide variety of vegetables and fermented foods. Bulgogi (Marinated, barbecued beef) and Bibimbap (Boiled rice mixed with vegetables) are the most famous.



### Money & Currency

The unit of Korean currency is the Won (₩). Coin denominations are ₩10, ₩50, ₩100 and ₩500. Banknotes are ₩1,000, ₩5,000, ₩10,000 and ₩50,000. The exchange rate is approximately USD 1 to KRW 1,171 as of July 12, 2012.

- Currency exchange: Foreign banknotes and traveler's check can be exchanged at foreign exchange banks and other authorized moneychangers.
- Traveler's checks: Accepted, but may be difficult to change in smaller towns. To avoid additional exchange rate charges, travelers are advised to take Traveler's check in US Dollars.
- Banking hours: Monday to Friday 09:00 - 16:00
- ATM operating hours: Monday to Friday 08:00-22:00



### **Credit Card**

Diners Club, Visa, American Express and MasterCard are widely accepted at major hotels, shops and restaurants in the larger cities. Check with your credit card company for details of merchant acceptability and other services which may be available.

### **Liability and Insurance**

The organizing committee will take no liability for personal injuries sustained by, or for loss or damage to property belonging to conference participants, either during or as a result of the conference. It is, therefore, advised that participants arrange their own personal health, accident and travel insurance. Emergency call numbers in Korea are 112 for police and 119 for fire/rescue and hospital service.

### **Time Zone**

Korean time is 9 hours ahead of Greenwich Mean Time (GMT+9).

### **Telephone Call**

A local call costs 70 for three minutes. For international call, first dial the international dialing code (001, 002 or 00700), then the country code, followed by the area code, and then the phone number. You can rent a cellular phone at the Incheon International Airport and Jeju International Airport.

### **1330 Korea Travel Phone**

Korea Travel Phone 1330, operated by the Korea Tourism Organization, is Korea's leading tourism information hotline, providing a variety of information on travel in Korea to both Korean and foreign tourists.

### **Business Hour**

Government office hours are usually from 9:00am to 6:00pm on weekdays and closed on weekends. Banks are open from 9:00am to 4:00pm on weekdays and closed on Saturday and Sunday. Major stores are open every day from 10:30am to 8:00pm including Sundays

### **Electricity**

The standard electricity supply is 220-volts AC/60 cycles. Most hotels may provide outlet converters for 110 and 220 volts. It is advised to check with the hotel beforehand.

### **Emergency Calls**

International SOS Korea provides a 24-hour emergency service for participants.  
1339 : For medical emergencies/First aid patient  
119 : Emergencies for fire / Rescue & Hospital service  
112 : Police

**For more information, please visit; <http://english.visitkorea.or.kr>**

## **International Conference STROKE UPDATE 2012**





Korean  
Stroke  
Society

## International Conference **STROKE UPDATE 2012**



### **International Conference STROKE UPDATE 2012 Secretariat**

Dongyang Trevell Officetel #109, 451-20 Chunho 3 dong, Gangdong-gu,  
Seoul 134-721 Korea

**Tel:** +82-2-476-6718 **Fax:** +82-2-476-6719 **E-mail:** [info@strokeupdate-kss.org](mailto:info@strokeupdate-kss.org)

**Web:** [www.strokeupdate-kss.org](http://www.strokeupdate-kss.org)